



# BEAULIEU HISTORY SOCIETY NEWSLETTER

No. 34 August 2018

## Editor's Column

### Past Meetings

Following the **Annual General Meeting**, rescheduled because of heavy March snow to 11 April 2018, there were short talks on Beaulieu in the Early 20th Century. One was on **Dorothy Burden**, a long-lived and respected resident of Beaulieu who died in 1990 at the age of 103. The content of that talk is reproduced in this newsletter.

Another talk was on the **Boys of Beaulieu**; following the lives of the men pictured in an early photograph of the choir of Beaulieu Abbey Church. A third introduced **Edward Mudge**; a photographer who produced thousands of stylish photographs and postcards of the Waterside area including Beaulieu in the first half of the 20th century.



On 27 April, the meeting looked at the work of painter and sculptor **Charles Sykes**. It focused particularly a three panel Triptych he painted in 1909 as an altarpiece for Beaulieu Abbey Church, and the Spirit of Ecstasy, his sculpture used as mascot on the bonnets of Rolls Royce cars to the current day. The talk by Ken Robinson, Anthony Norris and David Moore-Gwyn was in the church. Ken writes more of Charles Sykes in this newsletter.

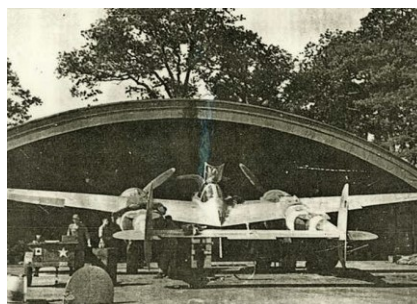
The **Visit to Lepe** on 15 June looked at the interesting history of Lepe House and its gardens, hosted by Emma Page whose family have lived at the property since they bought it from the Mitford family in 1879.

### Forthcoming Autumn Meetings

On 14 September 2018, the talk **Heart of Oak** will be on the fascinating story of the scarcity of timber in the 18th century. It was proposed that parts of the New Forest would be sacrificed to overcome it. The speaker Gale Gould has undertaken a PhD on the subject at Southampton University.

There will be talk on the **Development of Palace House**, Beaulieu on 8 October given by Bruce Bailey, architectural historian and archivist. He will focus on the extensive development of the house from the 13th century to current times. Only a restricted number of members can be accommodated at this talk.

At the end of November, we will have the talk **Airfields around Beaulieu**, postponed from earlier in the autumn. Dan Oxberry, a member of the Friends of the New Forest Airfields group will describe the rich heritage of flying in the area during WWII.



John Pemberton

## Contents

	Page
Dorothy Burden	2
Edward Montague	4
Charles Sykes	6

## Dates for your Diary

Friday 14 September 2018 6:30pm  
**Heart of Oak**  
presented by Gale Gould  
at Beaulieu Village Hall

Monday 8 October 2018 6:30pm  
**Development of Palace House**  
presented by Bruce Bailey  
at Palace House, Beaulieu

Friday 30 November 2018 6:30pm  
**Airfields around Beaulieu**  
presented by Dan Oxberry  
at Beaulieu Village Hall

## Subscriptions

Membership fees of £5 per member were due at the start of the calendar year. If you have not yet paid, you are encouraged to make an electronic bank transfer to Beaulieu History Society, sort code 20-53-53, account number 90157031. In the Reference box, please put your surname and what is being paid (membership, book, name of event), otherwise we may not know what the payment is for.

If available to you, this is a preferable alternative in cost and convenience to sending a cheque by post to the secretary Gillian Strathcarron at her address on the back page.

## Dorothy Burden - Local personality

At the April meeting of the History Society, Anne Coles gave a short talk on a remarkable lady, Dorothy Burden, who lived in Beaulieu from 1886 to 1990. The talk followed the gift to the History Society of Dorothy's own collection of press cuttings, photographs and other memorabilia, given by a distant cousin by marriage, Elizabeth Hayson, to whom we are very grateful.

Dorothy's grandfather, James, came to live in Beaulieu after he married Emily Tarver (whose parents were tenants of Park Farm) in Beaulieu Church in 1842. He was a vet, as was Dorothy's father (and uncle). They had important and valued expertise when rural transport was still by horse and farming a major occupation. The family moved to Beaulieu Mill in 1861/2. After his death in 1878, his widow, Emily, ran it until her death in 1891. Then two of her unmarried daughters, Jane and Clara, Dorothy's aunts, took over the tenancy until 1922. The meal they produced was distributed to local farmers as far away as Fawley. Altogether the family were tenants in Beaulieu for some 140 years.

Dorothy, herself, born in 1886, was christened in Beaulieu church. According to the Lymington Times, soon after she was born she contracted whooping cough. Apparently the doctor said to her mother 'Don't worry about the child because it will never live!' She survived to 103.

Born before Queen Victoria's Jubilee, at the height of Empire, in the age of steam, Dorothy's life spanned two world wars, decolonisation, the Cold War and its eventual thaw. In Britain there was the popularising of the motor car (not least by Beaulieu), and the coming of regular air transport. Votes for women were finally achieved in 1918 and 1928. There was the development of the welfare state in the 1950s. On the home front, radio and television arrived,



as did a plethora of domestic electrical appliances. So much change in a single lifetime.

Dorothy was a weekly boarder at a private school in Hythe and then at Miss Banks' establishment in Lymington. Both her parents died when she was under 21, her mother in 1902 and her father in 1907. Few occupations were then available to young women of her social class. So Dorothy became a companion, a respectable if limited career. First she went to a blind cousin, Miss Annie Rogers, who lived in Bromley, Kent. She lived with and cared for her for 22 years until Annie's death in 1930. Dorothy then returned to Beaulieu to be companion to her aunt Clara in Warner House until Clara too died in 1943. Aunt Jane had died earlier in 1925. Dorothy, then in her 50s, stayed on in the house until 1982 when, becoming increasingly blind, she moved to care homes in Lymington. She never married.

But a seemingly uneventful life does not begin to do justice to Dorothy's role in Beaulieu. Not only did she have a keen interest in all aspects of village life, including the outlying farms, staying in touch even during the years when she was away; but she was an active participant and contributor to it. She was a long-time member of the local Women's Institute, joining when Aunt Jane founded it. After

her death, the late Fred Norris wrote of her kindness, how her door was seldom shut, and how, to quote, 'she almost kept open house'. Admittedly obituaries are notoriously complimentary. But a contemporary of hers, writing in the 1970s, talks of her 'capability' and how she was 'deeply respected'. Elizabeth Haysom, who knew Dorothy in her later years said that she was 'feisty, 'direct', and 'a lady of the old school'.

She sustained her interest in the village until her death and, retaining an excellent memory, as an old lady still told splendid tales. Like many of her generation, she had a respect and affection both for the church and for the Montagu family, as the local landowners. Pearl Pleydell Bouverie, a long serving church warden, was to become a colleague and a friend. Several members of the Montagu family visited her on her 100th birthday and, in a letter of condolence after her death, Robin Pleydell Bouverie wrote of how much his family had enjoyed her stories.

Dorothy was already involved in the work of the church at the formation of the parochial church council in 1939, when the parish ceased to be a peculiar and came under the diocese. So she was qualified to become one of its founder councillors along with Pearl. Dorothy remained a member of the church council for the rest of her life, honoured by being retained in a non-acting capacity after she moved to Lymington. Altogether, she served under seven vicars. She was certainly not afraid to speak her mind in the council, in 1932 opposing one clergyman's suggestion that there might be a mixed choir. And speaking at her memorial service, an elderly cleric who knew her well as a long time family friend admitted that he had always called her Miss Burden – and never Dorothy!

continued ...

... continued

Many members will know the Beaulieu Record, a local history written by Captain Widnell, the former agent for the estate (1918-1953). He wrote that she was 'steeped in the lore of Beaulieu' and acknowledged the considerable amount of information that she had provided for his book.

Dorothy Burden not only rescued the church accounts of 1702-1838 (an important source for local history) when the then vicar wanted to throw them out, but is also responsible for the preservation of the triptych altarpiece by the artist Charles Sykes. This triptych was mounted above the high altar in Beaulieu Abbey Church for three



Dorothy with actor Jack Warner  
- Dixon of Dock Green -  
opening the Beaulieu Fete in 1976

decades in the early twentieth century. Over time it had deteriorated and was removed. In 1946 Dorothy persuaded the church council that

it should be kept, rather than destroyed. Widnell wrote that it was burnt in the 1960s. However last year the triptych was found in a furniture depository in Lymington and has now been returned to the church [as reported in Newsletter No. 32]. This could never have happened if Dorothy had not argued that it be kept.

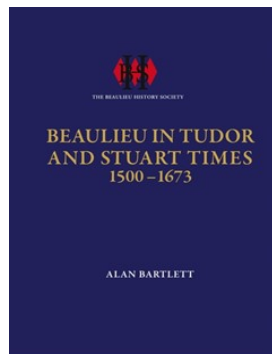
The Beaulieu History Society has good reason to be grateful to Miss Dorothy Burden, woman of her times, for her keen sense of history and deep love of Beaulieu's past.

Anne Coles

A publication of the Beaulieu History Society

## Beaulieu in Tudor and Stuart Times 1500–1673 by Alan Bartlett

Alan Bartlett, a retired civil servant, spent many years in the 1960s and '70s studying the history of Beaulieu and the 8,000-acre Beaulieu Estate. The Estate was acquired by the Wriothsesley family, later the Earls of Southampton, in 1538. Their descendant, the late Edward, Lord Montagu commissioned Alan Bartlett to reorganise the Estate archive and write a history of Beaulieu in the Wriothsesley period, which he completed in 1973.



inventories; all the result of Bartlett's research in the Palace House, Winchester and National Archives.

*Beaulieu in Tudor and Stuart Times* has for a long time been used as a valuable resource by anyone studying local history. The book remained in typescript form until the

Beaulieu History Society was given permission by the current Lord Montagu to publish it.

~~~

The book begins with an account of the last days of Beaulieu Abbey leading to the Dissolution and continues with the lives of the four Earls of Southampton, whose line died out with the death of the fourth Earl in 1667. Having no son, his three daughters divided up the Estate between them and the book continues the history until 1673, when the 4th Earl's daughter Elizabeth married the first Duke of Montagu.

The second part of the book is concerned with the topography of the Estate and the lives of all who lived there -- the tenant farmers and farmworkers, the clergymen, the shopkeepers and tradesmen. The social history of the times is brought vividly to life by using original letters, court and parish documents, wills and

If you would like to order a copy, please send a cheque for £20 plus £3.50 P&P to: Gillian Strathcarron, Secretary, Beaulieu History Society, Otterwood House, Beaulieu S042 7YS.

Alternatively, please transfer £23.50 to Beaulieu History Society, sort code 20-53-53, account number 90157031, putting BTST in the reference box and notify [gillian.s@mac.com](mailto:gillian.s@mac.com) of the address to which the book(s) should be sent.

Copies will also be available at History Society meetings. All enquiries please to Gillian Strathcarron, [gillian.s@mac.com](mailto:gillian.s@mac.com).

## Edward Montague - A colourful character

**Anthony Norris reports:** A few weeks ago I was contacted by Cynthia Castain whose mother Eleanor Montague was born in Beaulieu. The baptismal certificate records that her parents were living at The Rookery, in Dock Lane, but that she was actually born in Abbey Gate Cottage, the home of the village nurse. Cynthia was interested in researching her grandfather and his short time in Beaulieu.

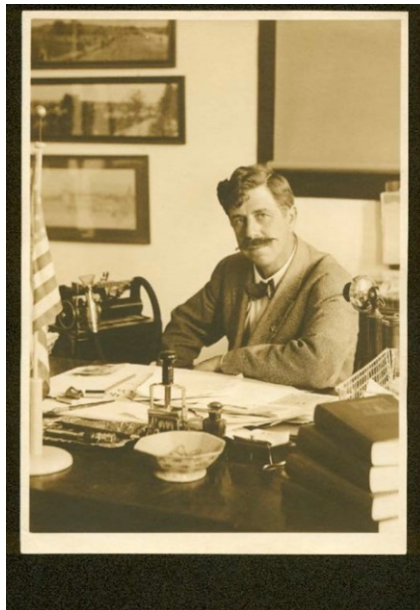
Using local records I was able to tell Cynthia much about the family's short stay in Beaulieu, and she was able to tell me much about her family. And what an interesting story it turned out to be!

In 1910, with Lord John Montagu, Edward Montague (more about the similarity of surnames later) formed The Terraform Syndicate Limited, a map-making and modelling company. Lord John Montagu built a studio for the Company on the site of the old gas works in Dock Lane. Edward Montague, as an expert in map modelling, was also engaged as manager of the Company at a salary of £5 a week and a house rent free. This was The Rookery, also in Dock Lane and very close to the new studio.



The Rookery

On Wednesday April 5th 1911 there was a fire at the studio and despite the efforts of the newly formed Beaulieu Fire Brigade, everything was destroyed. The photographic appliances in the studio were the latest and most up-to-date, one lens alone costing £700, and the total loss was in the region



Edward Montague

of £15,000. When the cause of the fire was investigated, Mr. Montague maintained that there had been problems with the electricity and on the night of the fire his electric lights at the Rookery had only worked intermittently. Following the fire a claim was made to the Insurance Company for some 25 models, many of which were subsequently found in Edward Montague's possession. The suspicion was arson but it was never proven.

What subsequently came to light was that Edward Montague had, unbeknown to Lord Montagu, opened offices in Southampton with a company name of Addesbourne & Co. He began to transfer items from the studio to his new offices and four days before the fire sent two boxes of models from Beaulieu Road Station to his offices in Southampton. Now, one of his pupils, William Draper, who was lodging at The Rookery, told his father, a Yorkshire vicar, who communicated this fact to Lord Montagu. Inquiries were made, and when The Rookery was searched by the police two glass photographic negatives were found. When these new offices in Southampton were searched, a lot of property identi-

fied as belonging to the syndicate was found.

Edward Montague was charged with 'feloniously stealing two glass photographic negatives, fifteen inches square, the property of the Terraform Syndicate Ltd.' In July he was summonsed to appear at Hythe Petty Sessions and was initially kept in custody but subsequently released on bail. There are no newspaper reports of the result of the case though a report in November 1911 records that he did not appear for trial and 'had gone to America'.

### HEAVY DAMAGES IN STUDIO FIRE.

A studio on Lord Montagu's estate of Beaulieu, in the New Forest, was destroyed by fire, damage being done to the amount of nearly £15,000.

A large quantity of photographs and other plant used in the production of aviation maps was destroyed, and the fire raged for several hours until the whole place was gutted.

The studio was situated some distance from Palace House, and the cause of the fire is unknown. Mr. E. Montagu discovered that the studio was on fire when he went to investigate the cause of the failure of the electric light. Assistance was summoned, and the fire brigade and every man in the village were soon on the spot. A gallant attempt was made to rescue some of the more valuable plant in the upper storey, but just as an entrance was gained the flames burst through the floor and the efforts of the rescuers were frustrated.

Chemicals used in the process of map making exploded at intervals with loud reports, and the fire raged for several hours.

Fortunately a wing of the building used as a drawing office was saved.

*The Diss Express*, Friday April 14th 1911

### STUDIO MYSTERY.

LORD MONTAGU AND THE MAP  
SECRET SYNDICATE.

DIRECTOR PROSECUTED.

Lord Montagu of Beaulieu figured prominently in an action at Hythe, Southampton, on Saturday, when Edward Montagu Montague, a director of the Terraform Syndicate, Ltd., was charged with feloniously stealing two glass photographic negatives, the property of the syndicate.

*Sheffield Daily Telegraph*  
Monday 17th July 1911

... continued

... continued

The name Edward Montagu Montague as the tenant of the Rookery seemed rather too much of a coincidence and my suspicions were well-founded. The man who came to Beaulieu to set up business with Lord Montagu had quite a colourful past. This I discovered in consultation with Cynthia.

Apparently he went under a number of aliases, his name changing as he moved around the country. It transpired that under the name of Edgar Antrobus Mackenzie he set up the Automobile Corporation and endeavoured to set up a motor omnibus service between Canter-

bury and Herne Bay. In 1905 this company went bankrupt with liabilities of £1373. I do not know of Lord John Montagu's involvement in the Automobile Corporation but it is probable that Edgar Antrobus Mackenzie's interest in the motor-ing industry led to his meeting with Lord John Montagu.

The circumstances by which Edgar Antrobus Mackenzie changed his name to Edward Montagu Montague and set up in partnership with Lord John Montagu are unclear but he was able to convince Lord John of his skills in map making and modelling enough to persuade him to set up the Terraform Syndicate in Beaulieu. Perhaps in changing

his name he was trying to impress his new partner, or perhaps he changed his name prior to meeting Lord John Montagu and used it to influence Lord John Montagu's decision to join the syndicate.

We believe that Edward Montagu Montague travelled to America to avoid sentence and by 1914 he was living in the United States under the name of James Tilworth Edwards. He continued making 3D maps and models for various purposes. He was said to have become a well-respected successful businessman who died in Los Angeles in 1959.

Anthony Norris

## Charles Sykes - Artist

**Ken Robinson, lead presenter in the talk on Charles Sykes in April 2018, talks of his researches into the artist's association with Beaulieu.**

Beaulieu History Society members know very well that 'history is fascinating'. I am a 'new boy'; at school, history was almost my weakest subject – all those dates, places long gone and names of people long dead. Failing to learn by rote the Kings and Queens of England was the nadir. 50 years ago, when I came to live and work at Beaulieu, my interest in history was transformed, as I began to discover the heritage of Beaulieu... from monastic days forward.

At first, my office was in Palace House, where I had frequent contact with Captain Widnell, and initiated the organisation of his accumulated Estate archive. The golden thread that began to weave my interest in history was all things associated with the Montagu patronage of this almost timeless area of England, and the invention and development of the motor car which Lord Edward Montagu recognised and curated throughout his life.



Every time Lord Montagu and I met to discuss the visitor business, a very beautiful bronze statue of Adam and Eve was on his desk or the nearby ledge.

The sculptor was Charles Sykes, who Lord John Montagu had en-



gaged as his illustrator on The Car Illustrated magazine, from its publication in 1902. His choice of this very talented artist was to chronicle and literally shape the evolution of 'horseless carriages', and to inspire the stylistic refinements that have been associated with the most glamorous and dynamic vehicles ever since.

I had not appreciated that the three finest motorists in England's 1000 Mile Trial in 1900 had been C S Rolls – Motor dealer – 1st, Claude Johnson – Secretary of the Automobile Club (later RAC, after which he became the managing director of Rolls Royce) 2nd, and John Montagu who finished 3rd. John then employed Claude's former Assistant, Eleanor Thornton, who thereafter became his close companion until her death in 1915 when travelling with John aboard the S.S. Persia, which was sunk by a German U-boat. John and Eleanor had a daughter, and John commemorated Eleanor's death with the plaque mounted on the east wall in Beaulieu Church, alongside the Montagu family pew.

continued ...

... continued

Charles Sykes was inspired by Eleanor, as the model for many of his sculptures, illustrations and paintings. He produced a dramatic trophy for Lord Montagu which clearly reflects his appreciation of the spirit of motoring and the female form.



Sykes was asked by Claude Johnson to illustrate the first Rolls Royce catalogue, which he did with greatly admired images of the cars in various settings, including one which depicted Lord John's shooting on the Beaulieu Estate.



what was to become, apart from religious iconography, the most famous statue in the world.

Charles Sykes artistic works were prolific, and apart from his work for John Montagu reflecting the Motor Car, his later works as a commercial artist were very varied.



There was however another aspect to his art that was very prominently placed at Beaulieu. This was

his altar triptych that was for many years placed above the altar in the Abbey Church, and is to be restored for occasional display in future, and his statue of the Madonna and Child that is in place high on the south wall of Palace House.



Members and guests who attended my talk in the Abbey Church were able to see a selection of Sykes finest works displayed there, by kind permission of Lord Montagu. As with so much of Beaulieu's very rich history, most of these objects and illustrations can be seen in situ today – and due to the family's absolute commitment to retaining and making accessible these items, they will be there

be discovered and enjoyed by more people in the future, especially those like me who didn't think history could be so fascinating.

Ken Robinson



This was so well received that Sykes was commissioned to produce what was to become his most famous work, a mascot of the highest quality to be placed on every Rolls Royce Motor car. Eleanor modelled for what has since become known as 'The Spirit of Ecstasy'. After I completed my researches for the BHS Charles Sykes presentation, I came to appreciate that Sykes had created

**Committee Members**

**Emma Page** (Chair) emma.page@lepe.org.uk  
**Peter Marling-Roberts** (Treasurer) pmarlingroberts@hotmail.co.uk  
**Christina Dykes** (Events) christina@exalon.net  
**John Pemberton** (Newsletter) johnpemberton@compuserve.com  
**Mary Montagu-Scott** mary.montaguscott@gravelly.com

**Anne Coles** anne@johncoles.plus.com  
**Ken Robinson** krobinsonlrt@gmail.com  
**Gillian Strathcarron** (Secretary) gillian.s@mac.com  
 whose details for contact are: 01590 612334  
 Otterwood House, Exbury Road, Beaulieu SO42 7YS